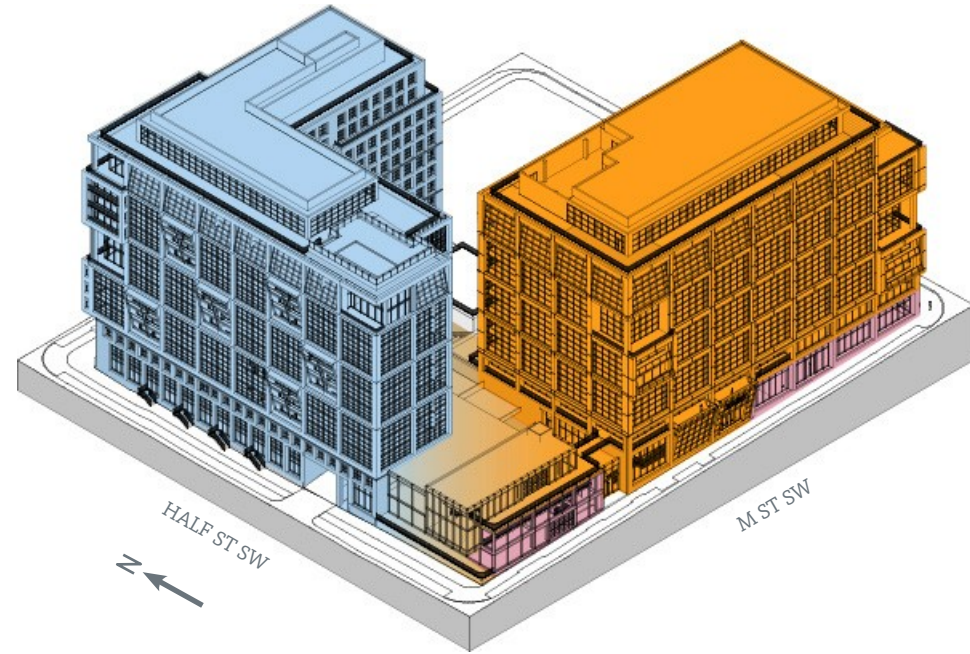


## SECTION 3

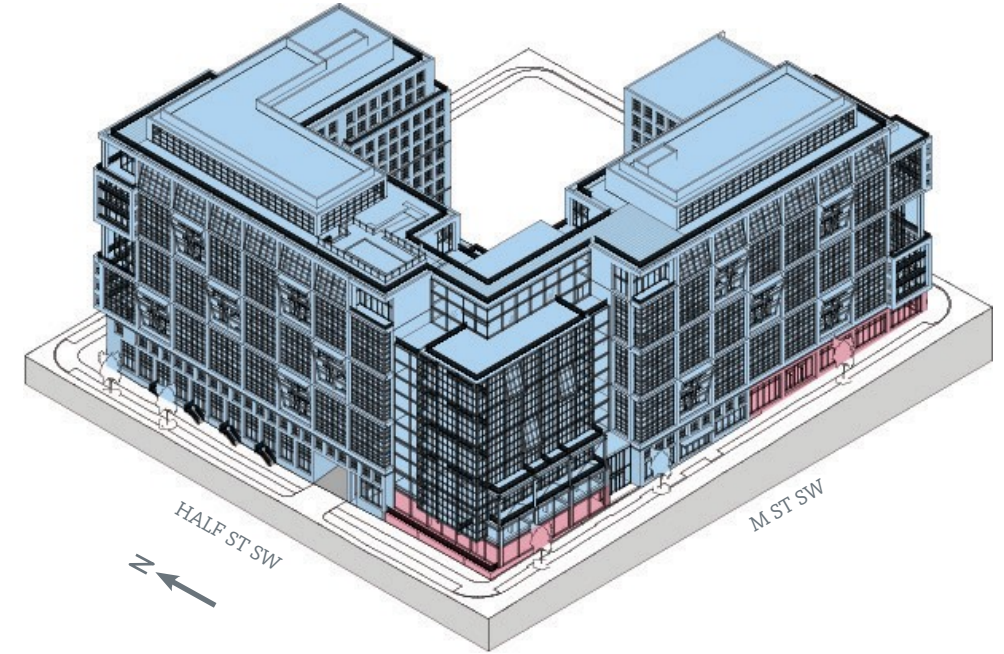
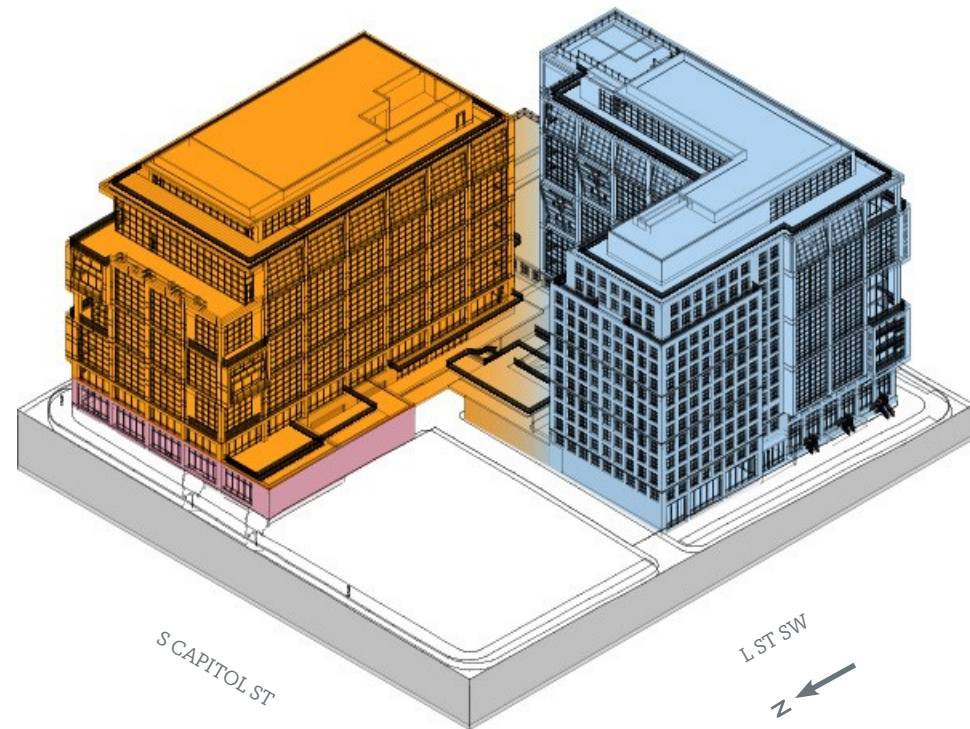
# DESIGN PROPOSAL

## Site Overview and Plans

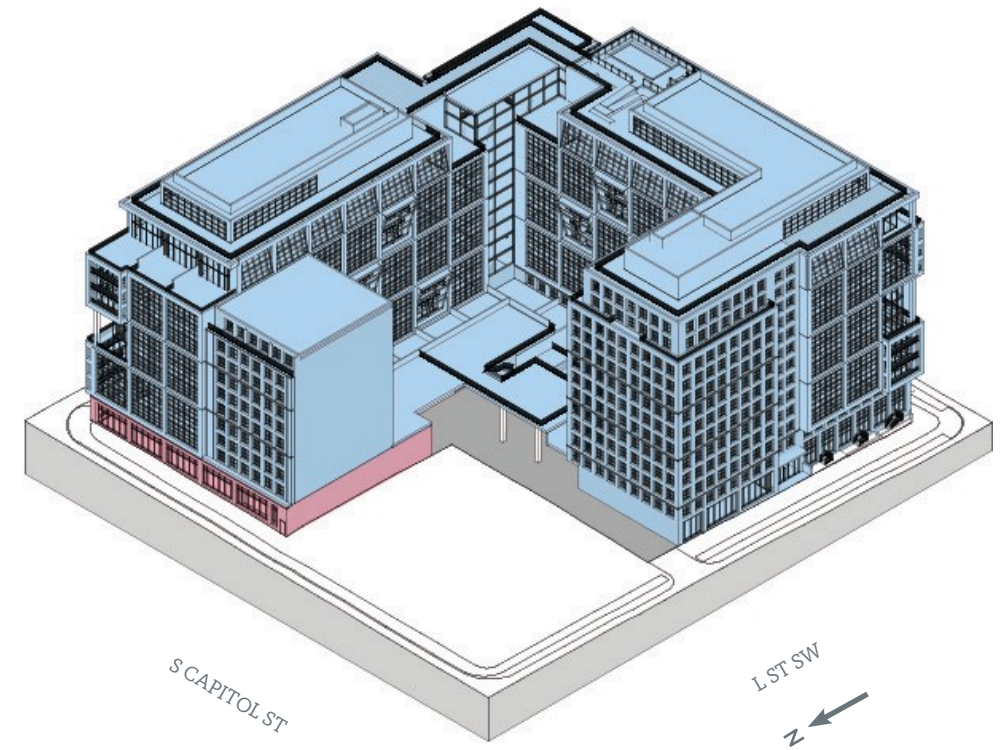
# Scheme Comparison Site Program Diagrams



**Mixed Use Scheme**



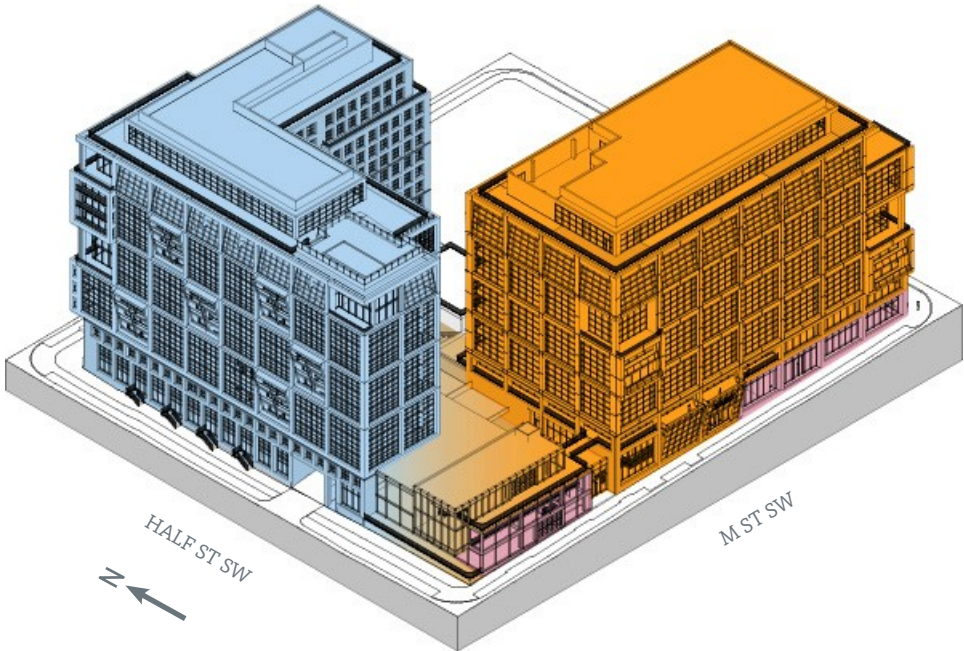
**Residential Scheme**



Office	Residential	Flex*	Retail
		RETAIL, RESI, OFFICE	

NOTES:  
 APPLICANT REQUESTS FLEXIBILITY TO VARY THE LOCATION AND DESIGN OF ALL INTERIOR COMPONENTS, INCLUDING PARTITIONS, STRUCTURAL SLABS, DOORS, RETAIL ENTRANCES, HALLWAYS, COLUMNS, STAIRWAYS, AND MECHANICAL ROOMS, PROVIDED THAT THE VARIATIONS DON'T CHANGE THE EXTERIOR CONFIGURATION OF THE BUILDING.

# Mixed Use Scheme

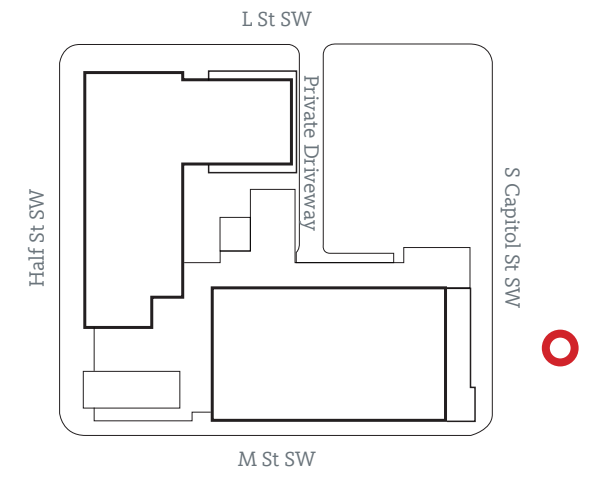




ROOF TERRACE FURNISHINGS AND LAYOUT ARE ILLUSTRATIVE AND SUBJECT TO CHANGE UPON TENANT BUILD-OUT.











**L STREET SW**

NOTES:

APPLICANT REQUESTS FLEXIBILITY TO VARY THE LOCATION AND DESIGN OF ALL INTERIOR COMPONENTS, INCLUDING PARTITIONS, STRUCTURAL SLABS, DOORS, RETAIL ENTRANCES, HALLWAYS, COLUMNS, STAIRWAYS, AND MECHANICAL ROOMS, PROVIDED THAT THE VARIATIONS DON'T CHANGE THE EXTERIOR CONFIGURATION OF THE BUILDING.

**HALF STREET SW**

**SOUTH CAPITOL ST SW**



**Compact : 8'x16'**  
**Standard : 9'x18'**

<b>Total</b>	<b>93 Spaces</b>
<b>Office</b>	<b>93 Spaces</b>
<b>Residential</b>	<b>0 Spaces</b>
<b>Retail</b>	<b>0 Spaces</b>

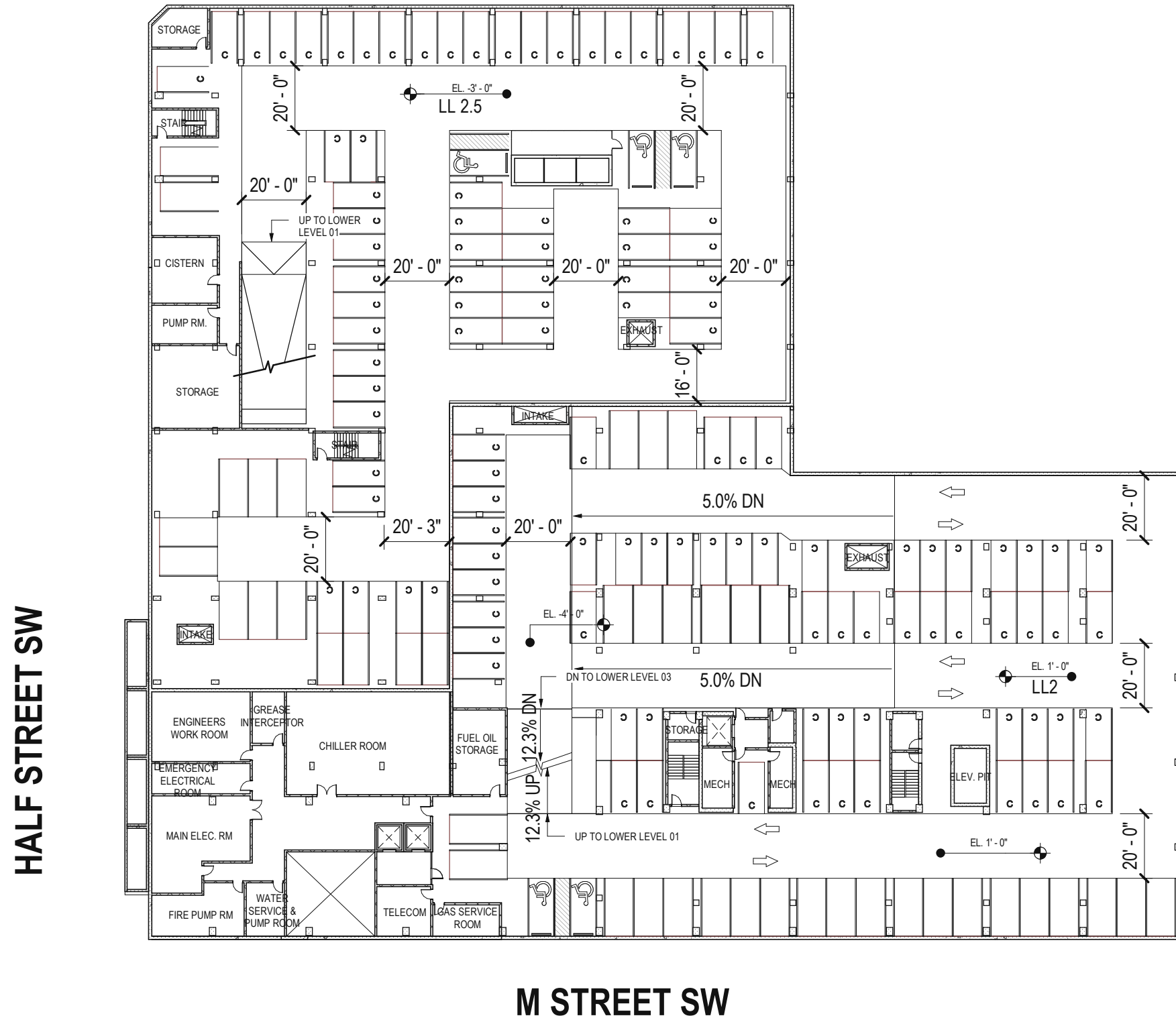
**M STREET SW**



L STREET SW

NOTES:

APPLICANT REQUESTS FLEXIBILITY TO VARY THE LOCATION AND DESIGN OF ALL INTERIOR COMPONENTS, INCLUDING PARTITIONS, STRUCTURAL SLABS, DOORS, RETAIL ENTRANCES, HALLWAYS, COLUMNS, STAIRWAYS, AND MECHANICAL ROOMS, PROVIDED THAT THE VARIATIONS DON'T CHANGE THE EXTERIOR CONFIGURATION OF THE BUILDING.



SOUTH CAPITOL ST SW

HALF STREET SW

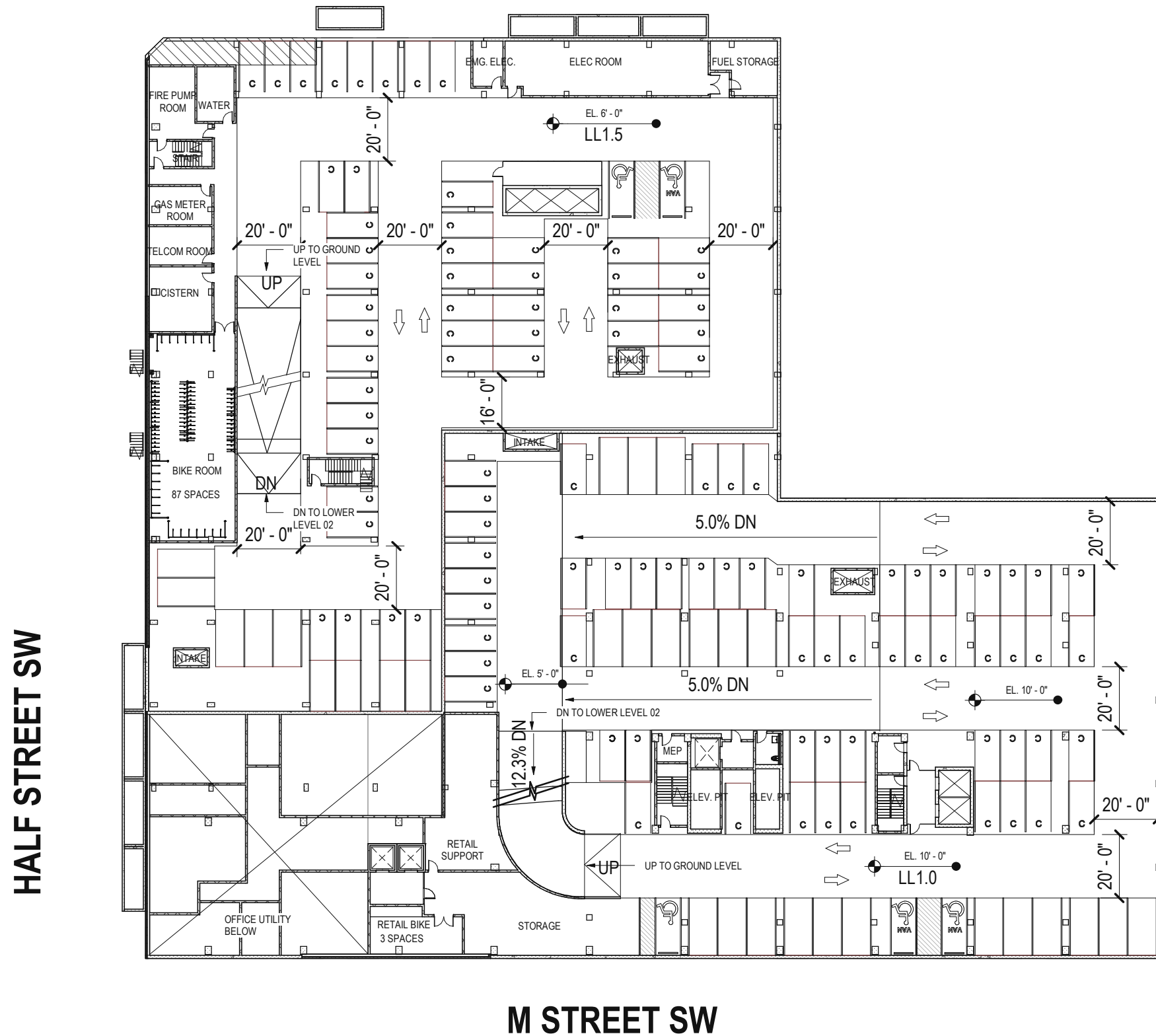
Compact : 8'x16'  
Standard : 9'x18'

Total	172 Spaces
Office	89 Spaces
Residential	83 Spaces
Retail	0 Spaces

M STREET SW



**L STREET SW**



NOTES:  
 APPLICANT REQUESTS FLEXIBILITY TO VARY THE LOCATION AND DESIGN OF ALL INTERIOR COMPONENTS, INCLUDING PARTITIONS, STRUCTURAL SLABS, DOORS, RETAIL ENTRANCES, HALLWAYS, COLUMNS, STAIRWAYS, AND MECHANICAL ROOMS, PROVIDED THAT THE VARIATIONS DON'T CHANGE THE EXTERIOR CONFIGURATION OF THE BUILDING.

**SOUTH CAPITOL ST SW**

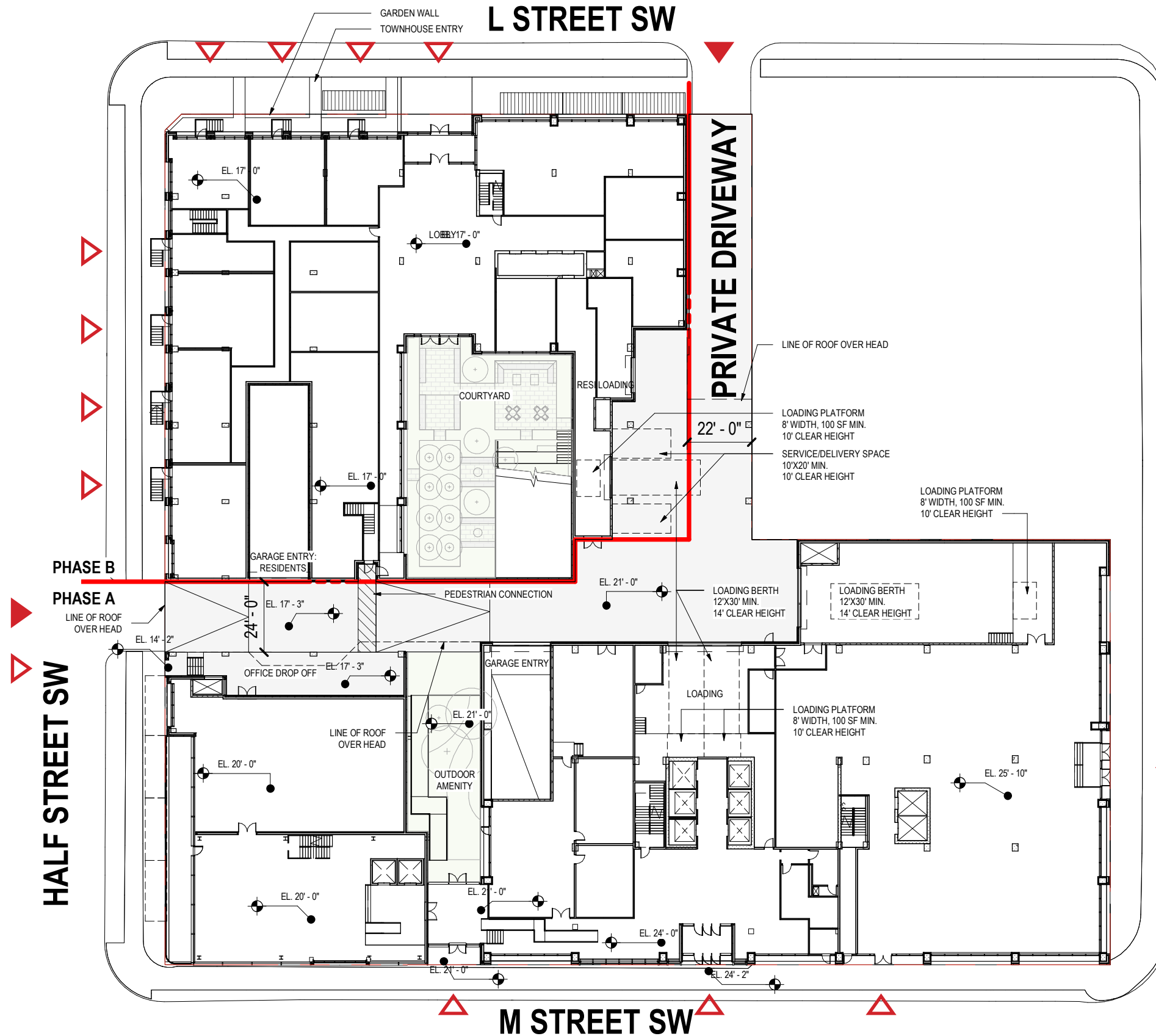
**HALF STREET SW**

**Compact : 8'x16'  
 Standard : 9'x18'**

<b>Total</b>	<b>138 Spaces</b>
<b>Office</b>	<b>0 Spaces</b>
<b>Residential</b>	<b>57 Spaces</b>
<b>Retail</b>	<b>81 Spaces</b>

**M STREET SW**





NOTES:

APPLICANT REQUESTS FLEXIBILITY TO VARY THE LOCATION AND DESIGN OF ALL INTERIOR COMPONENTS, INCLUDING PARTITIONS, STRUCTURAL SLABS, DOORS, RETAIL ENTRANCES, HALLWAYS, COLUMNS, STAIRWAYS, AND MECHANICAL ROOMS, PROVIDED THAT THE VARIATIONS DON'T CHANGE THE EXTERIOR CONFIGURATION OF THE BUILDING.

PHASE A & B OF THE PROJECT MAY BE BUILT SIMULTANEOUSLY OR IN PHASES.

THE DESIGN AND LAYOUT OF THE POOL, TRELIS, COURTYARDS, AND OUTDOOR AMENITY AREAS ARE PRELIMINARY AND ARE SHOWN FOR ILLUSTRATIVE PURPOSES ONLY. FINAL LAYOUTS MAY VARY.

- PEDESTRIAN ENTRANCE
- VEHICULAR ENTRANCE

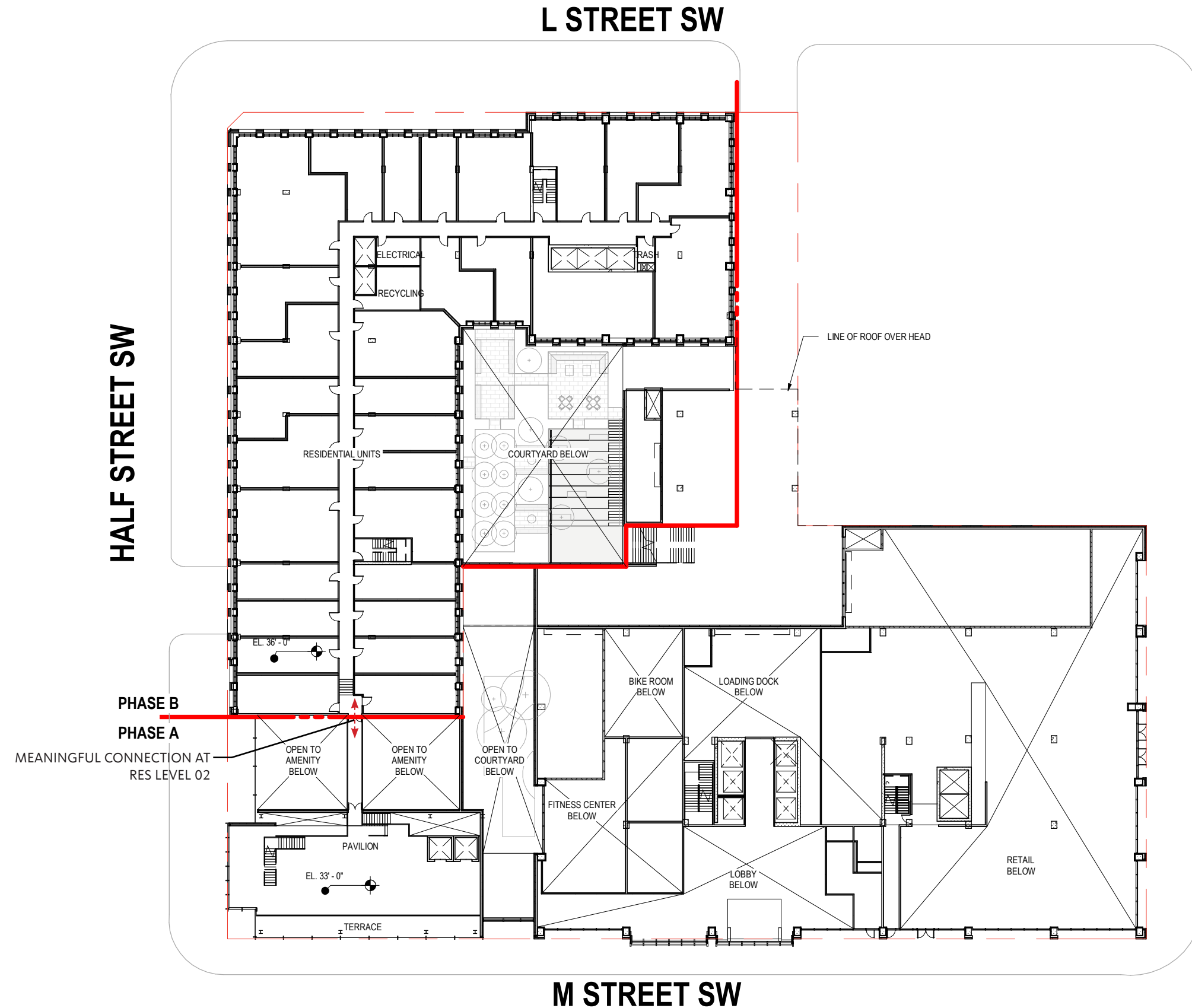


NOTES:

APPLICANT REQUESTS FLEXIBILITY TO VARY THE LOCATION AND DESIGN OF ALL INTERIOR COMPONENTS, INCLUDING PARTITIONS, STRUCTURAL SLABS, DOORS, RETAIL ENTRANCES, HALLWAYS, COLUMNS, STAIRWAYS, AND MECHANICAL ROOMS, PROVIDED THAT THE VARIATIONS DON'T CHANGE THE EXTERIOR CONFIGURATION OF THE BUILDING.

PHASE A & B OF THE PROJECT MAY BE BUILT SIMULTANEOUSLY OR IN PHASES.

THE DESIGN AND LAYOUT OF THE POOL, TRELIS, COURTYARDS, AND OUTDOOR AMENITY AREAS ARE PRELIMINARY AND ARE SHOWN FOR ILLUSTRATIVE PURPOSES ONLY. FINAL LAYOUTS MAY VARY.



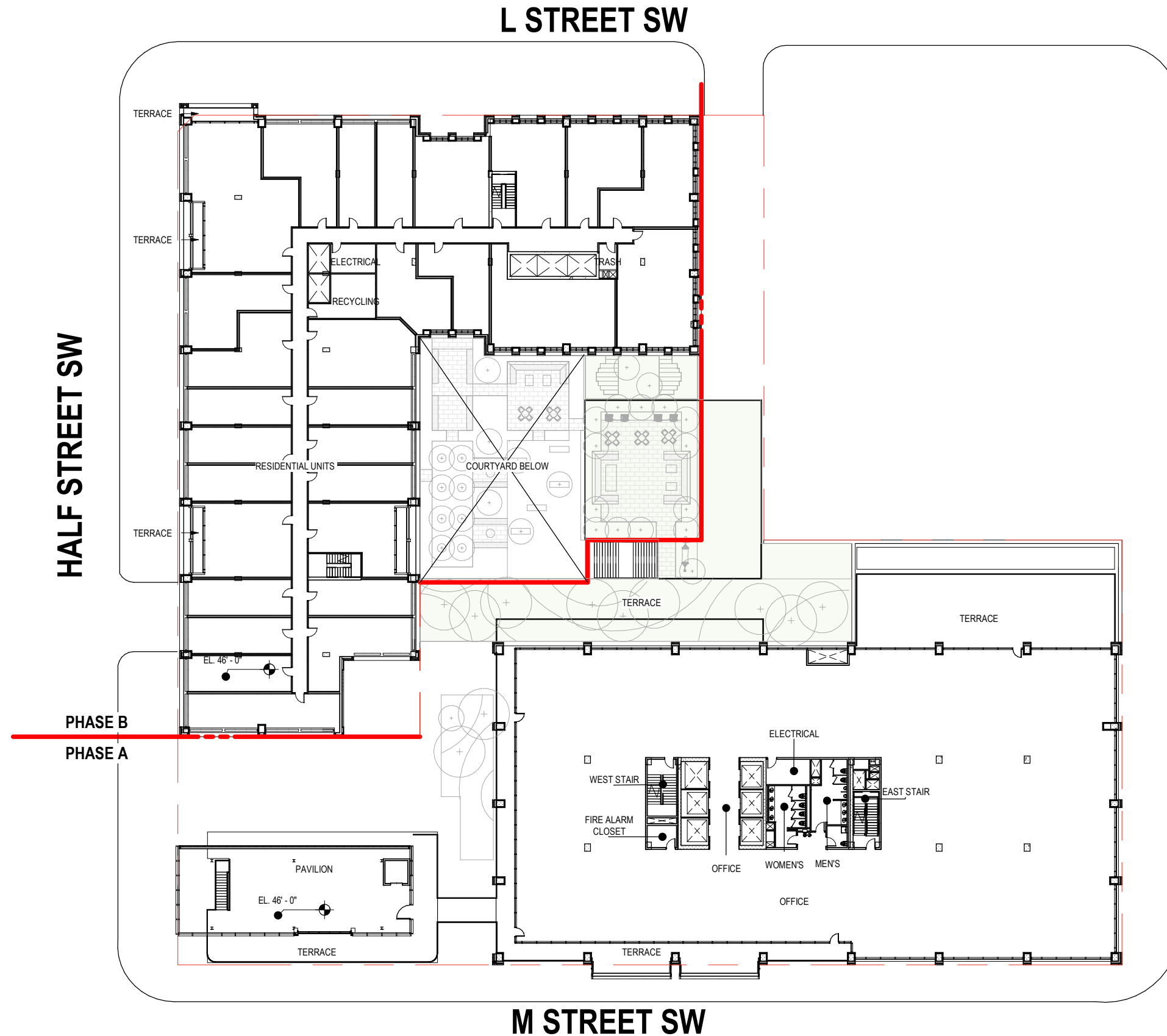
NOTES:

APPLICANT REQUESTS FLEXIBILITY TO VARY THE LOCATION AND DESIGN OF ALL INTERIOR COMPONENTS, INCLUDING PARTITIONS, STRUCTURAL SLABS, DOORS, RETAIL ENTRANCES, HALLWAYS, COLUMNS, STAIRWAYS, AND MECHANICAL ROOMS, PROVIDED THAT THE VARIATIONS DON'T CHANGE THE EXTERIOR CONFIGURATION OF THE BUILDING.

PHASE A & B OF THE PROJECT MAY BE BUILT SIMULTANEOUSLY OR IN PHASES.

THE DESIGN AND LAYOUT OF THE POOL, TRELIS, COURTYARDS, AND OUTDOOR AMENITY AREAS ARE PRELIMINARY AND ARE SHOWN FOR ILLUSTRATIVE PURPOSES ONLY. FINAL LAYOUTS MAY VARY.





NOTES:

APPLICANT REQUESTS FLEXIBILITY TO VARY THE LOCATION AND DESIGN OF ALL INTERIOR COMPONENTS, INCLUDING PARTITIONS, STRUCTURAL SLABS, DOORS, RETAIL ENTRANCES, HALLWAYS, COLUMNS, STAIRWAYS, AND MECHANICAL ROOMS, PROVIDED THAT THE VARIATIONS DON'T CHANGE THE EXTERIOR CONFIGURATION OF THE BUILDING.

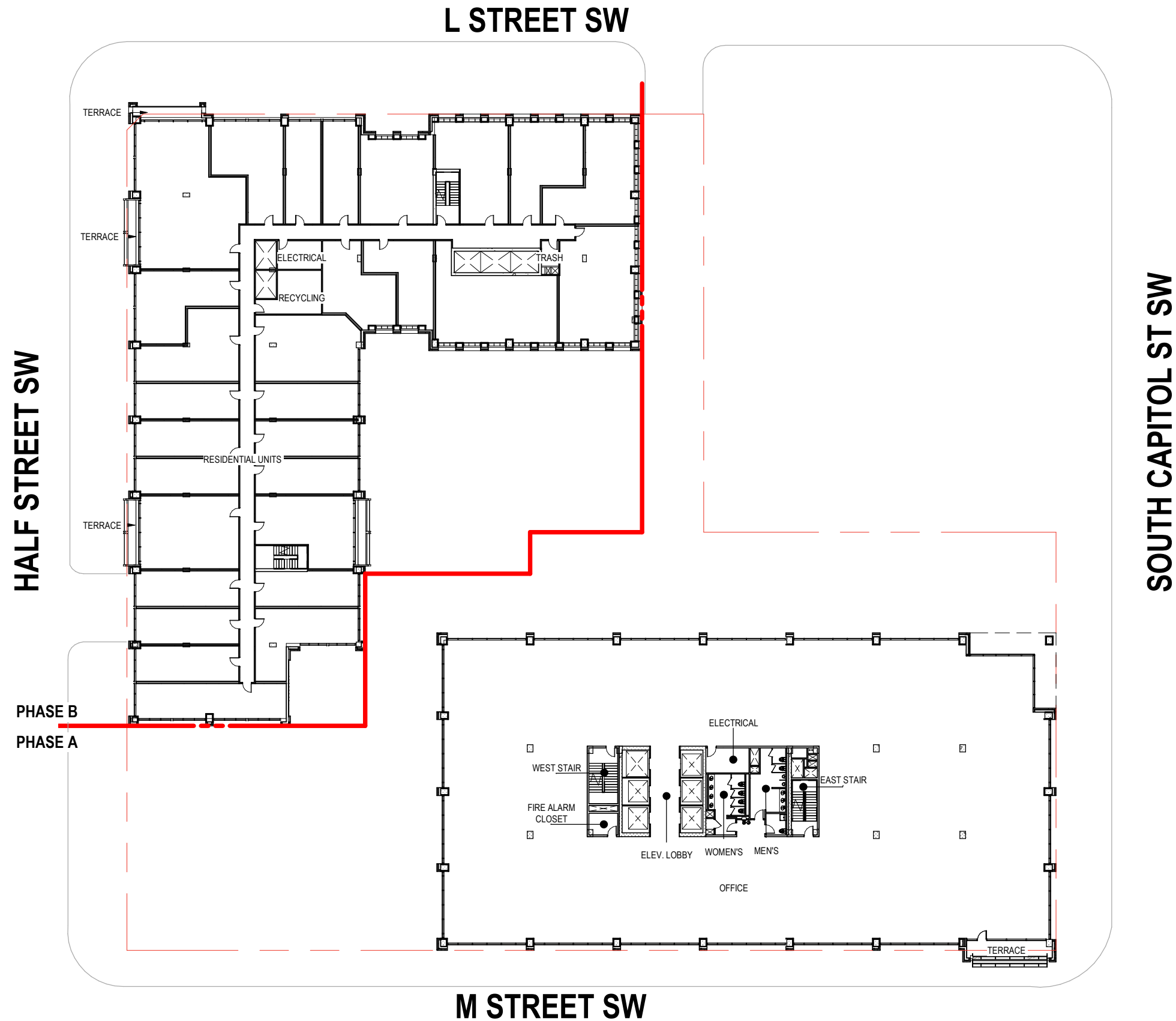
PHASE A & B OF THE PROJECT MAY BE BUILT SIMULTANEOUSLY OR IN PHASES.

THE DESIGN AND LAYOUT OF THE POOL, TRELIS, COURTYARDS, AND OUTDOOR AMENITY AREAS ARE PRELIMINARY AND ARE SHOWN FOR ILLUSTRATIVE PURPOSES ONLY. FINAL LAYOUTS MAY VARY.

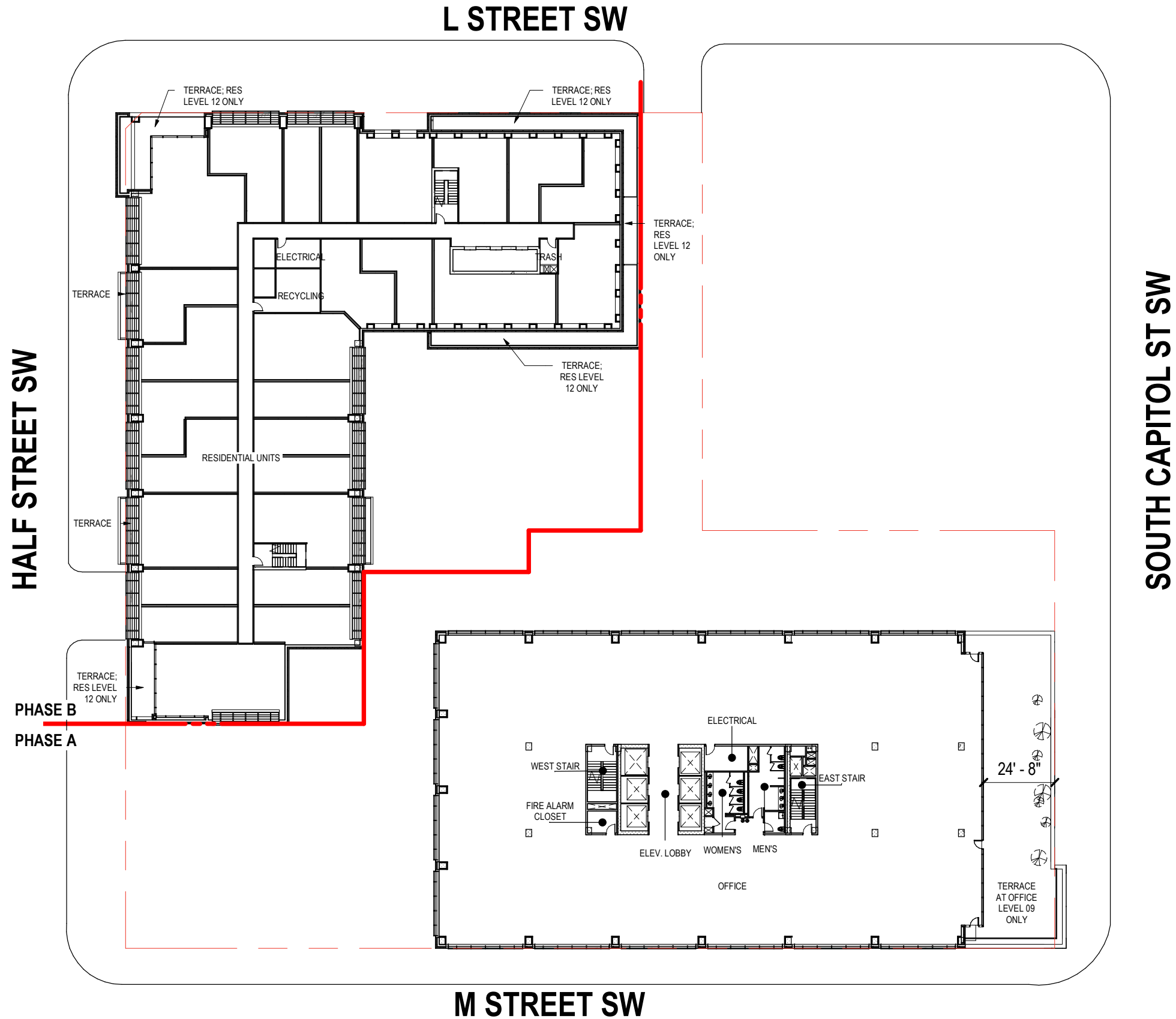
NOTES:

APPLICANT REQUESTS FLEXIBILITY TO VARY THE LOCATION AND DESIGN OF ALL INTERIOR COMPONENTS, INCLUDING PARTITIONS, STRUCTURAL SLABS, DOORS, RETAIL ENTRANCES, HALLWAYS, COLUMNS, STAIRWAYS, AND MECHANICAL ROOMS, PROVIDED THAT THE VARIATIONS DON'T CHANGE THE EXTERIOR CONFIGURATION OF THE BUILDING.

PHASE A & B OF THE PROJECT MAY BE BUILT SIMULTANEOUSLY OR IN PHASES.



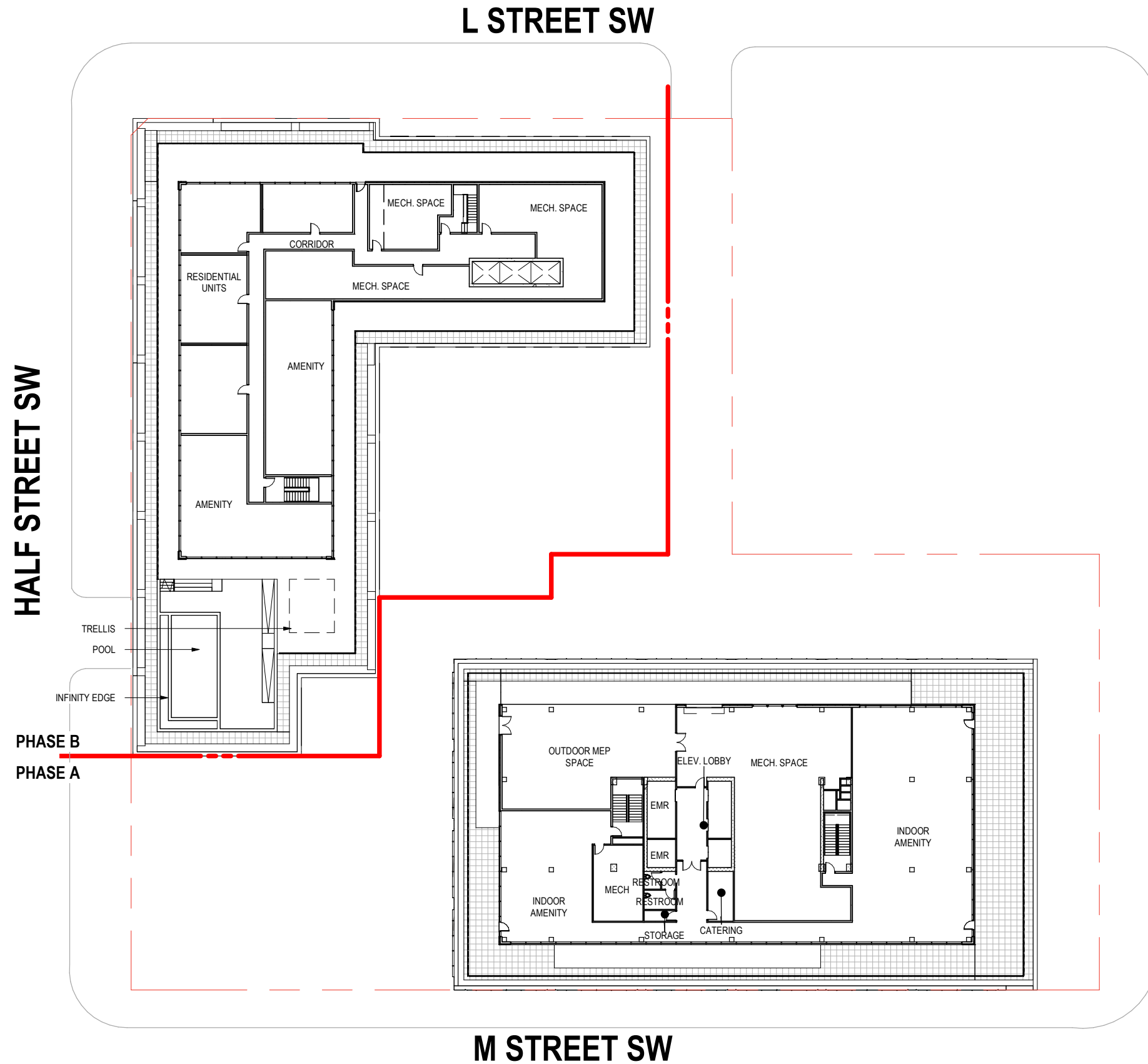




NOTES:

APPLICANT REQUESTS FLEXIBILITY TO VARY THE LOCATION AND DESIGN OF ALL INTERIOR COMPONENTS, INCLUDING PARTITIONS, STRUCTURAL SLABS, DOORS, RETAIL ENTRANCES, HALLWAYS, COLUMNS, STAIRWAYS, AND MECHANICAL ROOMS, PROVIDED THAT THE VARIATIONS DON'T CHANGE THE EXTERIOR CONFIGURATION OF THE BUILDING.

PHASE A & B OF THE PROJECT MAY BE BUILT SIMULTANEOUSLY OR IN PHASES.

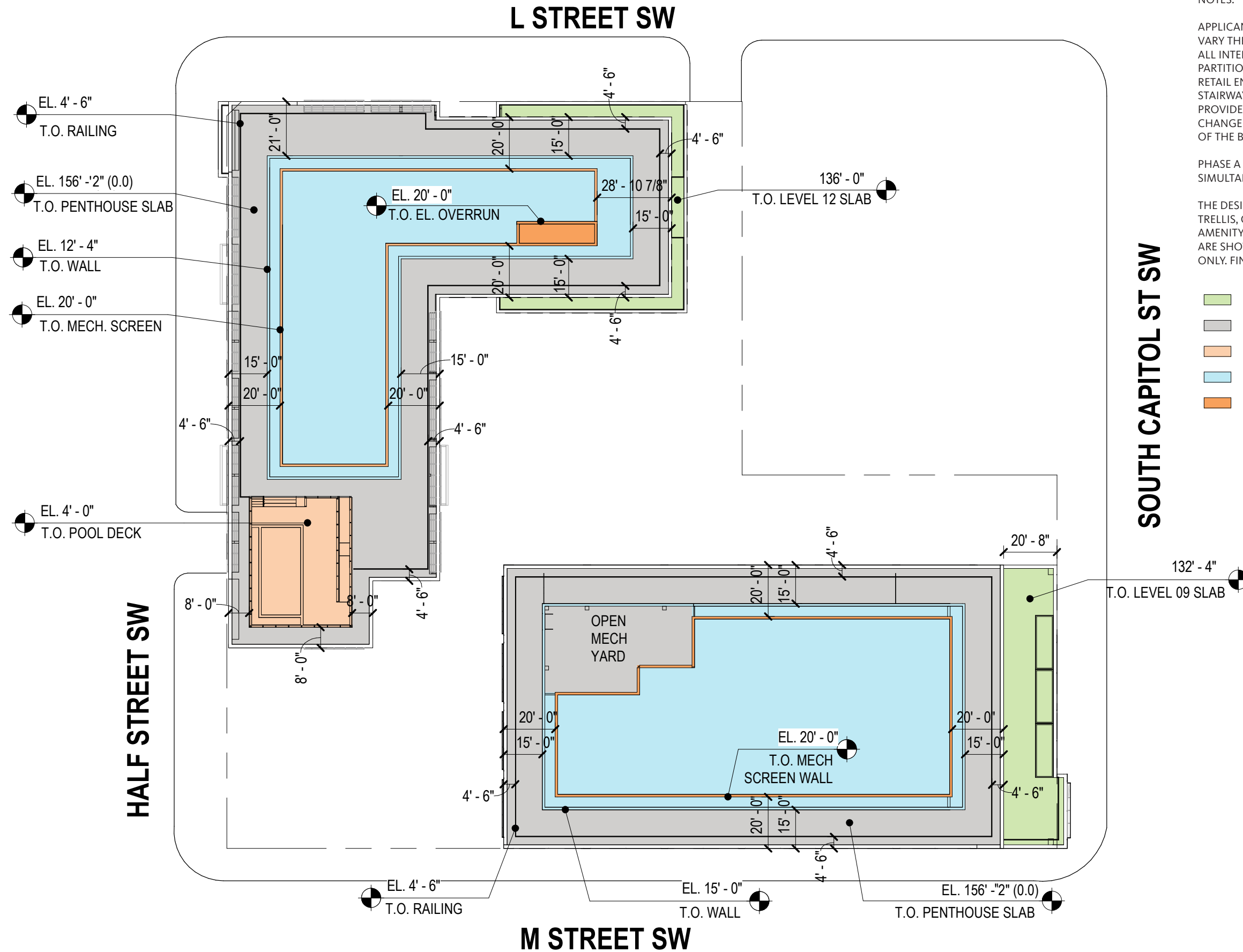


NOTES:

APPLICANT REQUESTS FLEXIBILITY TO VARY THE LOCATION AND DESIGN OF ALL INTERIOR COMPONENTS, INCLUDING PARTITIONS, STRUCTURAL SLABS, DOORS, RETAIL ENTRANCES, HALLWAYS, COLUMNS, STAIRWAYS, AND MECHANICAL ROOMS, PROVIDED THAT THE VARIATIONS DON'T CHANGE THE EXTERIOR CONFIGURATION OF THE BUILDING.

PHASE A & B OF THE PROJECT MAY BE BUILT SIMULTANEOUSLY OR IN PHASES.

THE DESIGN AND LAYOUT OF THE POOL, TRELLIS, COURTYARDS, AND OUTDOOR AMENITY AREAS ARE PRELIMINARY AND ARE SHOWN FOR ILLUSTRATIVE PURPOSES ONLY. FINAL LAYOUTS MAY VARY.



NOTES:

APPLICANT REQUESTS FLEXIBILITY TO VARY THE LOCATION AND DESIGN OF ALL INTERIOR COMPONENTS, INCLUDING PARTITIONS, STRUCTURAL SLABS, DOORS, RETAIL ENTRANCES, HALLWAYS, COLUMNS, STAIRWAYS, AND MECHANICAL ROOMS, PROVIDED THAT THE VARIATIONS DON'T CHANGE THE EXTERIOR CONFIGURATION OF THE BUILDING.

PHASE A & B OF THE PROJECT MAY BE BUILT SIMULTANEOUSLY OR IN PHASES.

THE DESIGN AND LAYOUT OF THE POOL, TRELLIS, COURTYARDS, AND OUTDOOR AMENITY AREAS ARE PRELIMINARY AND ARE SHOWN FOR ILLUSTRATIVE PURPOSES ONLY. FINAL LAYOUTS MAY VARY.

- TOP OF TERRACE SLAB BELOW
- TOP OF PENTHOUSE SLAB
- TOP OF POOL DECK
- TOP OF PENTHOUSE WALL
- TOP OF MECH SCREEN

